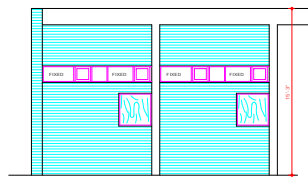
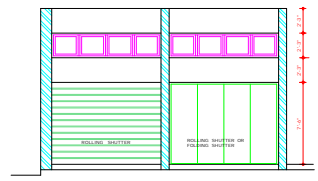


FRONT ELEVATION



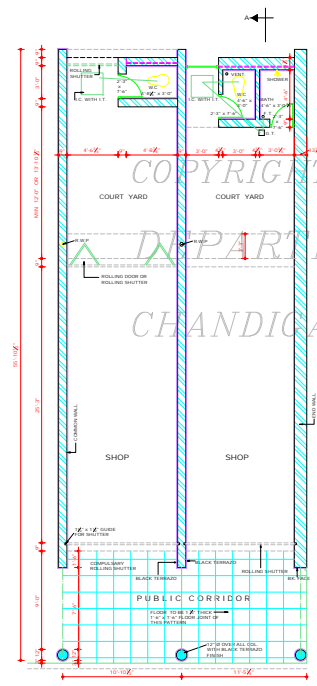
REAR ELEVATION (ALT No. 1)



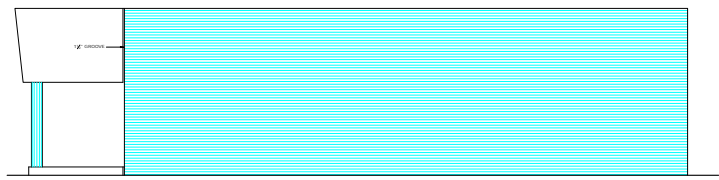
ELEVATION
LOOKING TOWARDS SHOP FROM COURT



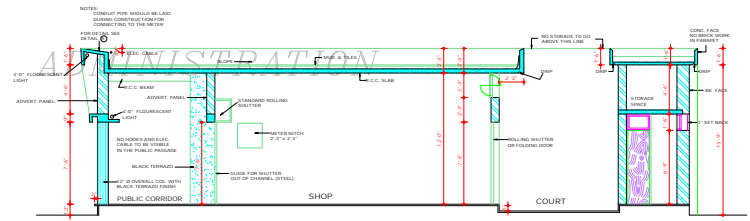
REVISED BACK ELEVATION (ALT No. 2)



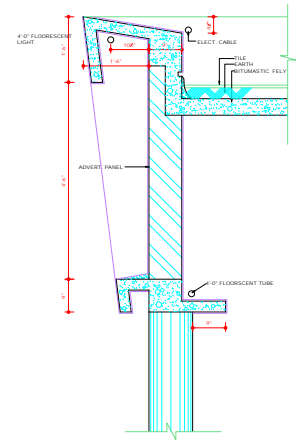
PLAN



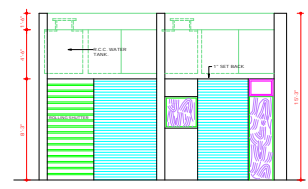
END ELEVATION



SECTION AT (A-A)



DETAIL AT (A)



ELEVATION LOOKING TOWARDS
W.C. & BATH FROM COURT

DEPARTMENT OF
ARCHITECTURE (Pb)

1. IN CASE A PERSON BUILD A SHOP WHOSE ADJOINING OWNER IS NOT YET BUILDING, HE SHOULD CARRY THE TERRAZZO FINISH ON THE FIN. WALL AND COL. TO THE FULL EXTENT SPECIFIED AND CHARGE HIS SHARE FROM THE ADJOINING OWNER.
2. VARIATION MADE ON 18.11.64 ON THE BASIS OF REPRESENTATION FROM THE OWNER OF THE BAY SHOP SECTOR 20. THE ROLLING SHUTTERS PROVIDED AT THE BACK TO GIVE ENTRY TO THE SHOP.
3. VARIATIONS MADE ON 24.8.60 AS BELOW ON THE BASIS OF P. H. ENGINEER'S REQUEST POSITION AND SIZE OF W.C. AND BATH HAVE BEEN CHANGED. WINDOW 3'-0" x 3'-0" HAS BEEN PROVIDED IN THE REAR SIDE POSITION OF I.C. AND C.T. AND THE DISPOSAL OF REFUSE HAVE BEEN SHOWN. SIZE OF COURT YARD HAS BEEN FIXED.

NOTE:
THIS DRAWING HAS BEEN COMPUTERISED ON
25-02-09 FROM DRG. NO. 1, JOB NO. 227.

S. NO.	DATE	SIGN
--------	------	------

REVISIONS	
SR.	REVISION
SR.	REVISION
SR.	REVISION
SR.	REVISION

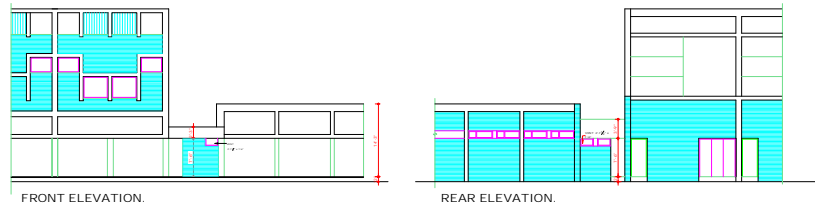
SCALE - 1/4" TO A FOOT	DATE: 4.1.60
DRAWN - PRAN NATH	DRG No. 1
TITLED -	JOB No. 227

DESIGN FOR SHOP
SIZE 10'-10 1/2" x 55'-10 1/2"
FOR BAJWARA
MIGRATION

DISCLAIMER
THOUGH EVERY CARE HAS BEEN TAKEN TO PROVIDE THE CORRECT VERSION OF THE ARCHITECTURAL CONTROL, ON THIS DIGITISED (PDF) FORMAT, YET IN CASE OF ANY DISCREPANCY THE MASTER COPY OR THE ARCHITECTURAL CONTROL APPLICABLE ON EACH SUCH SITE AS AVAILABLE IN THE COMMERCIAL RECORDS OF THE OFFICE OF CHIEF ARCHITECT OR HER/HS INTERPRETATION WILL OVERRULE THE DIGITIZED FORMAT.

SR. S. L. VARMA
S.E. 30
CHIEF ADMINISTRATOR

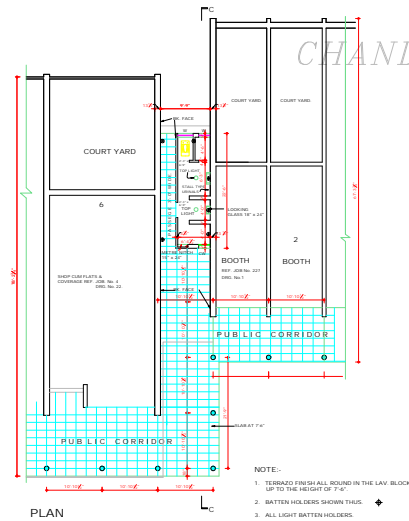
SR. S. I. ADITYA BARKASH
S.E. 30
(JUNIOR ARCHITECT)



FRONT ELEVATION.

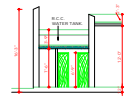
REAR ELEVATION.

COPYRIGHT:
DEPARTMENT OF URBAN PLANNING
CHANDIGARH ADMINISTRATION

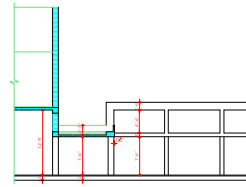


PLAN

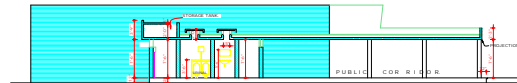
- NOTE:-
1. TERRAZZO FINISH ALL ROUND IN THE LAV. BLOCK UP TO THE HEIGHT OF 7'-0"
 2. BATTEN HOLDERS SHOWN THUS
 3. ALL LIGHT BATTEN HOLDERS



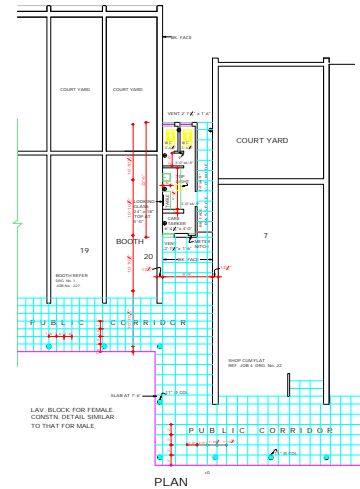
SECTION AA'



SECTION BB'



SECTION CC'



PLAN

LAV. BLOCK FOR FEMALE CONSTR. DETAIL SIMILAR TO THAT FOR MALE

DISCLAIMER

THOUGH EVERY CARE HAS BEEN TAKEN TO PROVIDE THE CORRECT VERSION OF THE ARCHITECTURAL DRAWING, ON THE DIGITIZED FORM, YET IN CASE OF ANY DISCREPANCY, THE MASTER COPY OF THE ARCHITECTURAL RECORDS APPLICABLE TO EACH DRAWING, AS AVAILABLE IN THE COMMERCIAL RECORD OF THE OFFICE OF CHIEF ARCHITECT OR HAVING INTERPRETATION WILL OVERRULE THE DIGITIZED FORMAT.

ATTESTED TRUE COPY.

SG. KUMAR
19-73
ASST. ARCHITECT.

CHANDIGARH
PROJECT .

NOTES.

THIS DRG. IS THE PROPERTY OF THE DEPT. OF ARCHITECTURE, CHANDIGARH, U.T. AND FORMERLY THE GOVT. OF PUNJAB AND MUST NOT BE ALTERED, COPIED OR USED IN WHOLE OR IN PART WITHOUT THE PERMISSION OF THIS DEPT. IN WRITING.

FOR DETAILS & COVERAGE OF COURT YARD SEE DRG. No. 122 OF JOB No. 4 IN CASE OF S.C.T.

THIS DRG. IS TRACED FROM DRG. No. 2, JOB No. 227 DATED 13.73

SG. 12-73

SPECIFICATIONS:-

1. FLOORING - KUTAN STONE FLOORING OF SIZE 30" X 30"
2. DADO - DADO FINISHED IN IVORY COLOUR. GLAZED TILES 4" X 6" UP TO 4' 0"
3. JOHNEY - FOR DOOR GL. SHEET GLAZED WITH PRESSED STEEL FRAMING & FITTING SHALL BE USED.
4. FAN VENTILATORS - 1' X 1' I.B.C. FABRIC WELDED IN 1" X 1" O BRON PAINTED BLACK SHALL BE PROVIDED.
5. FIXTURES - STALL TYPE URINALS, SEAT SHALL BE OF CERAM. PAN TYPE.
- ✓ TOILET SPECIFICATION REVISED: 10-5-94
SG.

NOTE:
THIS DRAWING HAS BEEN COMPUTERISED ON D.S.D. OR FROM DRG. NO. 2, JOB NO. 227.

S.NO.	REVISIONS	DATE	SIGN

SG. P. SHARDEET
1-8-73
CHIEF ARCHITECT &
CHIEF TOWN PLANNER

SG. ADITYA PARKASH
1-8-73
ARCHITECT.

OFFICE OF THE
CHIEF ARCHITECT
CHANDIGARH, U.T.

SCALE - EIGHT FEET TO AN INCH. DATE:

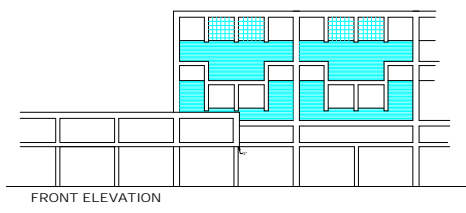
DRAWN 200 3 FEB 1973	DRG. No. 2/1	JOB No. 227
----------------------------	-----------------	----------------

SG. RAJESH
1-8-73
ARCHITECT.

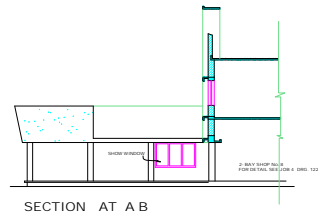
JUNCTIONS BETWEEN
SHOP - CUM - FLATS
AND BOOTHS No. 6, 1
AND 7, 20 .
RESPECTIVELY IN SECTOR -
20/C AND LAVATORIES.

CHANDIGARH
PROJECT

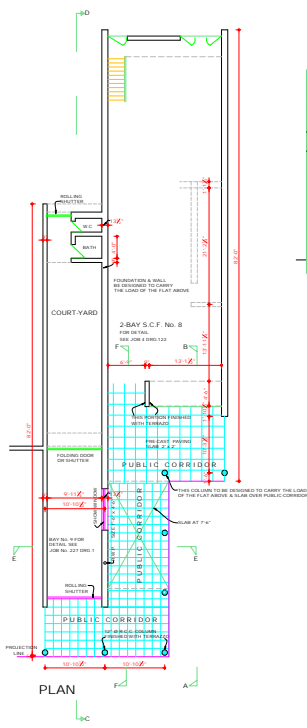
THIS DRAWING IS THE PROPERTY OF THE DEPT. OF ARCHITECTURE CHANDIGARH U.T. & MUST NOT BE ALTERED, COPIED OR USED IN WHOLE OR IN PART WITHOUT THE PERMISSION OF THE DEPT. IN WRITING.



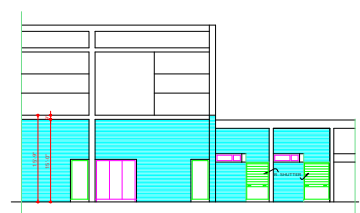
FRONT ELEVATION



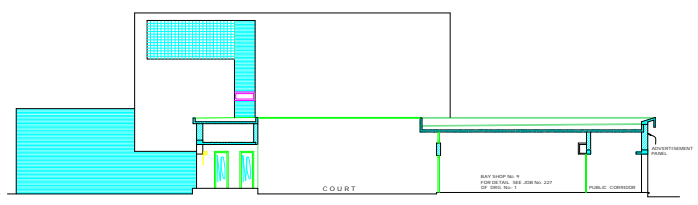
SECTION AT A B



PLAN



REAR ELEVATION

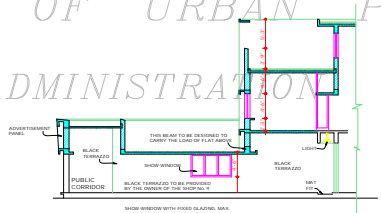


SECTION AT C-D

COPYRIGHT:
DEPARTMENT OF URBAN PLANNING
CHANDIGARH ADMINISTRATION



SECTION E-E



SECTION F-F

- Sr: O.P. MEHTA
DT: 11.7.90
CHIEF ARCHITECT
- Sr: S.K. MIDHA
DT: 6.7.90
SENIOR ARCHITECT
- Sr: SARBJEET SINGH
DT: 3.7.90
ARCHITECT
- Sr: T.KAUR
CHIEF ADMINISTRATOR

DISCLAIMER
THOUGH EVERY CARE HAS BEEN TAKEN TO PROVIDE THE CORRECT VERSION OF THE ARCHITECTURAL CONTROL ON THIS DIGITIZED (PDF) FORMAT. IN THE CASE OF ANY DISCREPANCY, THE MASTER COPY OF THE ARCHITECTURAL CONTROL APPLICABLE TO THE PROJECT SITE AS AVAILABLE IN THE COMMERCIAL RECORDS OF THE OFFICE OF CHIEF ARCHITECT OR HERETOBY INTERPRETATION WILL OVERRULE THE DIGITIZED FORMAT.

ATTESTED AS TRUE COPY CHIEF ADMINISTRATOR
Sr: KUREKAR

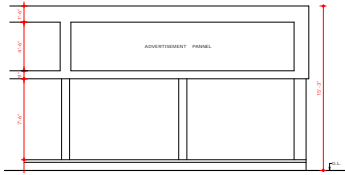
APPROVAL OF THE FINANCE SECRETARY CHANDIGARH FOR THE ADDITIONS AND ALTERATIONS FOR PROVIDING OF DRAWING AT THE REAR END OF SHARDA HOUSING BAY SHOP No. 9 TO 16 IN SECTOR 18-D, RECEIVED VIDE MEMO No. 2913-87-1071(A)-RCH/41 DATED: 18.9.90

NOTE: THIS DRAWING HAS BEEN COMPUTERISED ON 06-02-09 FROM DRG NO. 3, JOB NO. 227

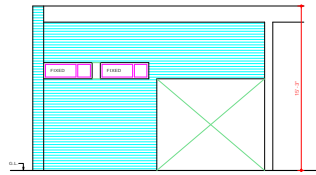
Sr: P. JANKHAR CHIEF ARCHITECT	SENIOR ARCHITECT
Sr: ADITYA PARKASH ARCHITECT	ASSTT. ARCHITECT

SCALE - EIGHT FEET TO AN INCH	
DRAWN	CHECKED
JOB No. 227	DATE
	DRG. No. 3

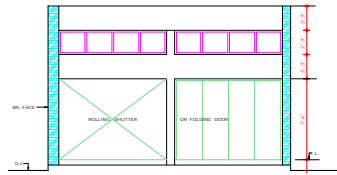
JUNCTION BETWEEN BAY SHOP No. 9 AND BAY SHOP No. 8 IN SECTOR 18-D



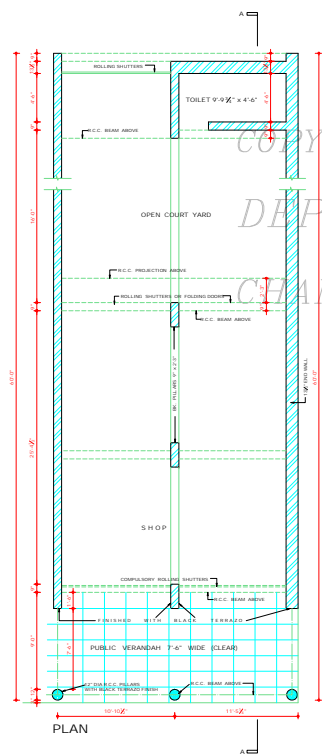
FRONT ELEVATION



REAR ELEVATION

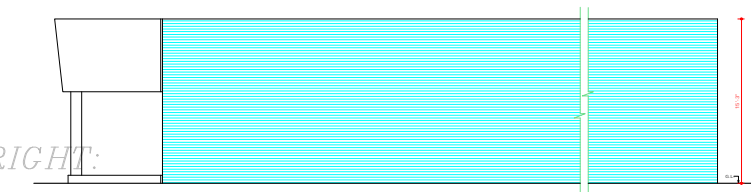


ELEVATION (INTERIOR)

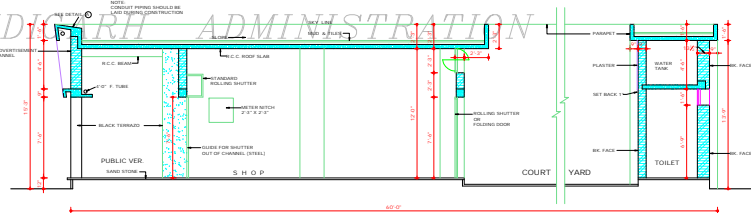


PLAN

COPYRIGHT:
DEPARTMENT OF URBAN PLANNING
CHANDIGARH ADMINISTRATION

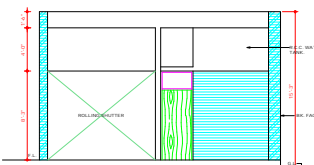


END ELEVATION

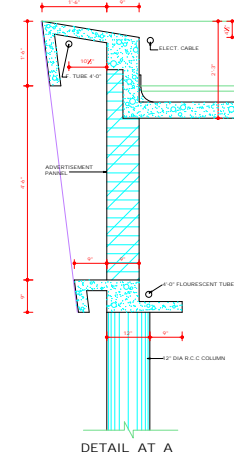


SECTION AT AA'

NOTE:
1. IN CASE A PERSON BUILDS A SHOP FIRST HE CAN CHANGE WALLS & COLUMNS FROM THE ADJOINING OWNER'S WALLS & WALLS.
2. NO BRICK WORK IN PARAPET WALLS.
3. NO STORAGE ABOVE SKY LINE.
4. NO HOODS OR ELECTRIC CABLES SHOULD BE VISIBLE IN THE PUBLIC VERANDAH.



ELEVATION (INTERIOR)



DETAIL AT A

DEPARTMENT OF ARCHITECTURE	
<p>1. THIS DRG. IS THE PROPERTY OF THE DEPTT. OF ARCHITECTURE CHANDIGARH U.T. AND MUST NOT BE ALTERED COPIED OR USED IN WHOLE OR IN PART WITHOUT THE PERMISSION OF THIS DEPTT. IN WRITING.</p> <p>2. THIS DRG. IS ACTUALLY TRACED FROM DRG. No. 4 OF JOB No. 227 ON DATED</p>	
<p>NOTE:- THIS DRAWING HAS BEEN COMPUTERISED ON 10.02.09 FROM DRG. No. 4, JOB NO. 227</p>	
DESCRIPTION	DATE SIGN
REVISIONS	
SP-01	SP-01
SP-02	SP-02
SP-03	SP-03
SP-04	SP-04
SP-05	SP-05
SP-06	SP-06
SP-07	SP-07
SP-08	SP-08
SP-09	SP-09
SP-10	SP-10
SP-11	SP-11
SP-12	SP-12
SP-13	SP-13
SP-14	SP-14
SP-15	SP-15
SP-16	SP-16
SP-17	SP-17
SP-18	SP-18
SP-19	SP-19
SP-20	SP-20
SP-21	SP-21
SP-22	SP-22
SP-23	SP-23
SP-24	SP-24
SP-25	SP-25
SP-26	SP-26
SP-27	SP-27
SP-28	SP-28
SP-29	SP-29
SP-30	SP-30
SP-31	SP-31
SP-32	SP-32
SP-33	SP-33
SP-34	SP-34
SP-35	SP-35
SP-36	SP-36
SP-37	SP-37
SP-38	SP-38
SP-39	SP-39
SP-40	SP-40
SP-41	SP-41
SP-42	SP-42
SP-43	SP-43
SP-44	SP-44
SP-45	SP-45
SP-46	SP-46
SP-47	SP-47
SP-48	SP-48
SP-49	SP-49
SP-50	SP-50
SP-51	SP-51
SP-52	SP-52
SP-53	SP-53
SP-54	SP-54
SP-55	SP-55
SP-56	SP-56
SP-57	SP-57
SP-58	SP-58
SP-59	SP-59
SP-60	SP-60
SP-61	SP-61
SP-62	SP-62
SP-63	SP-63
SP-64	SP-64
SP-65	SP-65
SP-66	SP-66
SP-67	SP-67
SP-68	SP-68
SP-69	SP-69
SP-70	SP-70
SP-71	SP-71
SP-72	SP-72
SP-73	SP-73
SP-74	SP-74
SP-75	SP-75
SP-76	SP-76
SP-77	SP-77
SP-78	SP-78
SP-79	SP-79
SP-80	SP-80
SP-81	SP-81
SP-82	SP-82
SP-83	SP-83
SP-84	SP-84
SP-85	SP-85
SP-86	SP-86
SP-87	SP-87
SP-88	SP-88
SP-89	SP-89
SP-90	SP-90
SP-91	SP-91
SP-92	SP-92
SP-93	SP-93
SP-94	SP-94
SP-95	SP-95
SP-96	SP-96
SP-97	SP-97
SP-98	SP-98
SP-99	SP-99
SP-100	SP-100
SP-101	SP-101
SP-102	SP-102
SP-103	SP-103
SP-104	SP-104
SP-105	SP-105
SP-106	SP-106
SP-107	SP-107
SP-108	SP-108
SP-109	SP-109
SP-110	SP-110
SP-111	SP-111
SP-112	SP-112
SP-113	SP-113
SP-114	SP-114
SP-115	SP-115
SP-116	SP-116
SP-117	SP-117
SP-118	SP-118
SP-119	SP-119
SP-120	SP-120
SP-121	SP-121
SP-122	SP-122
SP-123	SP-123
SP-124	SP-124
SP-125	SP-125
SP-126	SP-126
SP-127	SP-127
SP-128	SP-128
SP-129	SP-129
SP-130	SP-130
SP-131	SP-131
SP-132	SP-132
SP-133	SP-133
SP-134	SP-134
SP-135	SP-135
SP-136	SP-136
SP-137	SP-137
SP-138	SP-138
SP-139	SP-139
SP-140	SP-140
SP-141	SP-141
SP-142	SP-142
SP-143	SP-143
SP-144	SP-144
SP-145	SP-145
SP-146	SP-146
SP-147	SP-147
SP-148	SP-148
SP-149	SP-149
SP-150	SP-150
SP-151	SP-151
SP-152	SP-152
SP-153	SP-153
SP-154	SP-154
SP-155	SP-155
SP-156	SP-156
SP-157	SP-157
SP-158	SP-158
SP-159	SP-159
SP-160	SP-160
SP-161	SP-161
SP-162	SP-162
SP-163	SP-163
SP-164	SP-164
SP-165	SP-165
SP-166	SP-166
SP-167	SP-167
SP-168	SP-168
SP-169	SP-169
SP-170	SP-170
SP-171	SP-171
SP-172	SP-172
SP-173	SP-173
SP-174	SP-174
SP-175	SP-175
SP-176	SP-176
SP-177	SP-177
SP-178	SP-178
SP-179	SP-179
SP-180	SP-180
SP-181	SP-181
SP-182	SP-182
SP-183	SP-183
SP-184	SP-184
SP-185	SP-185
SP-186	SP-186
SP-187	SP-187
SP-188	SP-188
SP-189	SP-189
SP-190	SP-190
SP-191	SP-191
SP-192	SP-192
SP-193	SP-193
SP-194	SP-194
SP-195	SP-195
SP-196	SP-196
SP-197	SP-197
SP-198	SP-198
SP-199	SP-199
SP-200	SP-200
SP-201	SP-201
SP-202	SP-202
SP-203	SP-203
SP-204	SP-204
SP-205	SP-205
SP-206	SP-206
SP-207	SP-207
SP-208	SP-208
SP-209	SP-209
SP-210	SP-210
SP-211	SP-211
SP-212	SP-212
SP-213	SP-213
SP-214	SP-214
SP-215	SP-215
SP-216	SP-216
SP-217	SP-217
SP-218	SP-218
SP-219	SP-219
SP-220	SP-220
SP-221	SP-221
SP-222	SP-222
SP-223	SP-223
SP-224	SP-224
SP-225	SP-225
SP-226	SP-226
SP-227	SP-227
SP-228	SP-228
SP-229	SP-229
SP-230	SP-230
SP-231	SP-231
SP-232	SP-232
SP-233	SP-233
SP-234	SP-234
SP-235	SP-235
SP-236	SP-236
SP-237	SP-237
SP-238	SP-238
SP-239	SP-239
SP-240	SP-240
SP-241	SP-241
SP-242	SP-242
SP-243	SP-243
SP-244	SP-244
SP-245	SP-245
SP-246	SP-246
SP-247	SP-247
SP-248	SP-248
SP-249	SP-249
SP-250	SP-250
SP-251	SP-251
SP-252	SP-252
SP-253	SP-253
SP-254	SP-254
SP-255	SP-255
SP-256	SP-256
SP-257	SP-257
SP-258	SP-258
SP-259	SP-259
SP-260	SP-260
SP-261	SP-261
SP-262	SP-262
SP-263	SP-263
SP-264	SP-264
SP-265	SP-265
SP-266	SP-266
SP-267	SP-267
SP-268	SP-268
SP-269	SP-269
SP-270	SP-270
SP-271	SP-271
SP-272	SP-272
SP-273	SP-273
SP-274	SP-274
SP-275	SP-275
SP-276	SP-276
SP-277	SP-277
SP-278	SP-278
SP-279	SP-279
SP-280	SP-280
SP-281	SP-281
SP-282	SP-282
SP-283	SP-283
SP-284	SP-284
SP-285	SP-285
SP-286	SP-286
SP-287	SP-287
SP-288	SP-288
SP-289	SP-289
SP-290	SP-290
SP-291	SP-291
SP-292	SP-292
SP-293	SP-293
SP-294	SP-294
SP-295	SP-295
SP-296	SP-296
SP-297	SP-297
SP-298	SP-298
SP-299	SP-299
SP-300	SP-300
SP-301	SP-301
SP-302	SP-302
SP-303	SP-303
SP-304	SP-304
SP-305	SP-305
SP-306	SP-306
SP-307	SP-307
SP-308	SP-308
SP-309	SP-309
SP-310	SP-310
SP-311	SP-311
SP-312	SP-312
SP-313	SP-313
SP-314	SP-314
SP-315	SP-315
SP-316	SP-316
SP-317	SP-317
SP-318	SP-318
SP-319	SP-319
SP-320	SP-320
SP-321	SP-321
SP-322	SP-322
SP-323	SP-323
SP-324	SP-324
SP-325	SP-325
SP-326	SP-326
SP-327	SP-327
SP-328	SP-328
SP-329	SP-329
SP-330	SP-330
SP-331	SP-331
SP-332	SP-332
SP-333	SP-333
SP-334	SP-334
SP-335	SP-335
SP-336	SP-336
SP-337	SP-337
SP-338	SP-338
SP-339	SP-339
SP-340	SP-340
SP-341	SP-341
SP-342	SP-342
SP-343	SP-343
SP-344	SP-344
SP-345	SP-345
SP-346	SP-346
SP-347	SP-347
SP-348	SP-348
SP-349	SP-349
SP-350	SP-350
SP-351	SP-351
SP-352	SP-352
SP-353	SP-353
SP-354	SP-354
SP-355	SP-355
SP-356	SP-356
SP-357	SP-357
SP-358	SP-358
SP-359	SP-359
SP-360	SP-360
SP-361	SP-361
SP-362	SP-362
SP-363	SP-363
SP-364	SP-364
SP-365	SP-365
SP-366	SP-366
SP-367	SP-367
SP-368	SP-368
SP-369	SP-369
SP-370	SP-370
SP-371	SP-371
SP-372	SP-372
SP-373	SP-373
SP-374	SP-374
SP-375	SP-375
SP-376	SP-376
SP-377	SP-377
SP-378	SP-378
SP-379	SP-379
SP-380	SP-380
SP-381	SP-381
SP-382	SP-382
SP-383	SP-383
SP-384</	