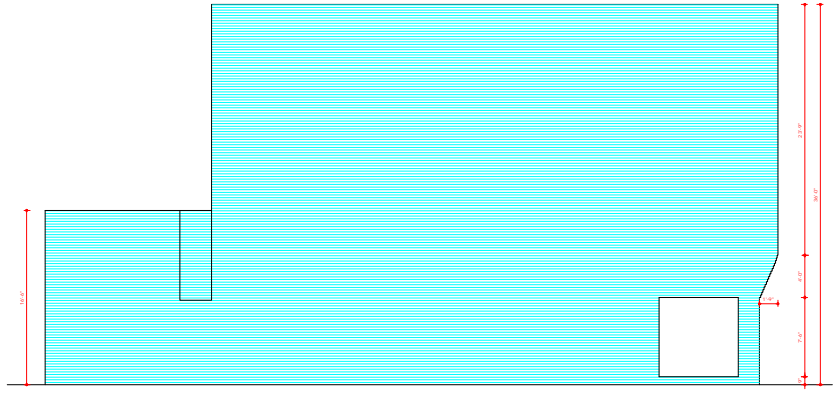
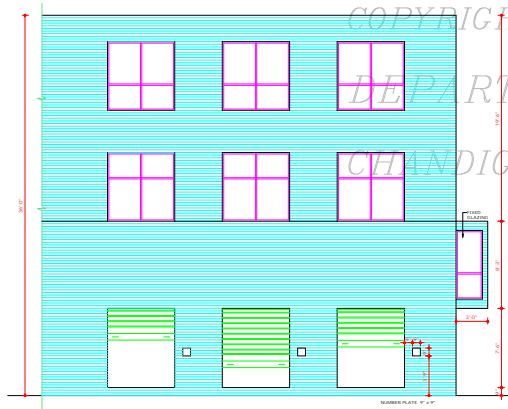


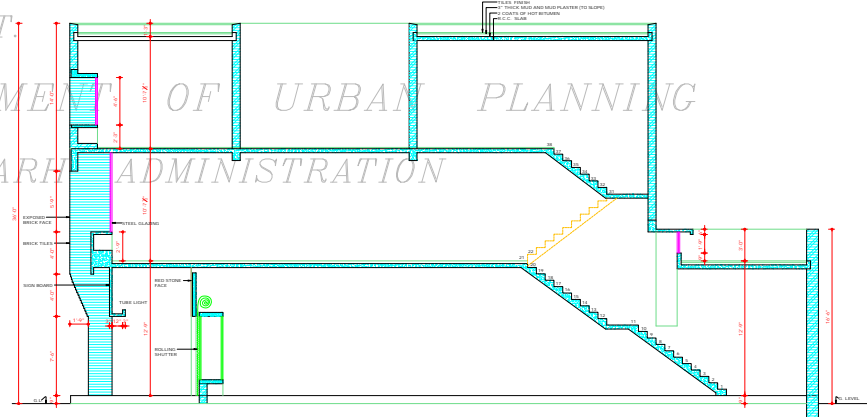
FRONT ELEVATION



SIDE ELEVATION



REAR ELEVATION



SECTION AT BB

DEPARTMENT OF ARCHITECTURE.

THIS DRG. IS THE PROPERTY OF THE DEPTT. OF ARCHITECTURE, CHANDIGARH U.T. AND FORMERLY THE COPY OF PL. AND MUST NOT BE ALTERED, COPIED OR USED IN WHOLE OR IN PART WITHOUT THE PERMISSION OF THIS DEPTT. IN WRITING.

ONLY QUALIFIED ARCHITECT ARE ALLOWED TO SIGN PLANS, SUPERVISE CONSTRUCTION AND ISSUE COMPLETION CERTIFICATES FOR THESE BUILDINGS.

FOR PLANS REF. DRG. No. JOB No.

THIS DRG. IS ACTUALLY TRACED FROM DRG. No. 2 OF JOB No. 114 DATED 22nd JULY 1973. Sd/- 22nd JULY 1973.

NOTE: THIS DRAWING IS THE COMPUTERISED REPRODUCTION OF ORIGINAL DRG. No. 2 OF JOB No. 114 DATED 22/07/73.

S.No.	DESCRIPTION	DATE	SIGN.
REVISIONS			

Sd/- M.A. SHARMA 2.8.70 CHIEF ARCHITECT.	Sd/- D.C. HANNA 2.8.70 SENIOR ARCHITECT.
Sd/- O.P. MEHTA 11.8.70 ARCHITECT.	Sd/- YOGAL SINGH ASST. ARCHITECT.

OFFICE OF THE CHIEF ARCHITECT CHANDIGARH. U.T.

SCALE - 1/4" TO A FOOT	DATE 1-7-70
DRAWN Sd/- 2nd JULY 1973	DRG. No. 2
	JOB No. 715

SHOP CUM OFFICE IN SECTOR 28-D (SEMI - INDUSTRIAL) ELEVATIONS & SECTION.

DISCLAIMER

THOUGH EVERY CARE HAS BEEN TAKEN TO PROVIDE THE CORRECT VERSION OF THE ARCHITECTURAL CONTROL ON THIS DIGITIZED (PDF) FORMAT, YET IN CASE OF ANY DISCREPANCY, THE MASTER COPY OF THE ARCHITECTURAL CONTROL AVAILABLE ON EACH SUCH SITE, AS AVAILABLE IN THE COMMERCIAL RECORD OF THE OFFICE OF CHIEF ARCHT. IS RELIABLE. VISUAL INTERPRETATION WILL OVERRULE THE DIGITIZED FORMAT.

ATTESTED TRUE COPY
Sd/- KUREKAR
6.7.73
ASSTT. ARCHITECT

Sd/- JOINDER SINGH
2.8.70
CHIEF ADMINISTRATOR

COPYRIGHT
DEPARTMENT OF URBAN PLANNING
CHANDIGARH ADMINISTRATION